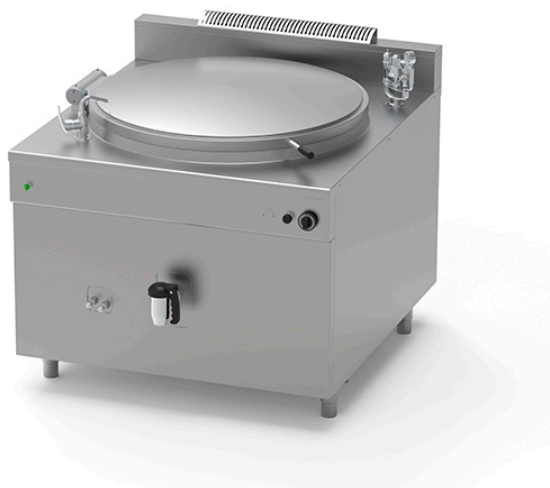


GAS BOILING PAN OF 200 L, INDIRECT HEATING PQF.IG-200/N

Ref: 1115.824.004

Icos



Ignition by means of manual piezo igniter and pilot flame.

Heating by means of high-performance tubular burners in AISI 304 stainless steel.

Ventilation grille.

Set of nozzles for various types of gas.

Control of water level in jacket with maximum/minimum taps, with option for automatic water filling.

Jacket pressure control by means of safety valve calibrated at 0.5 bar, vacuum relief valve, pressure gauge (indirect gas version with jacket only).

FEATURES

Dimensions (WDH) 1000x1150x850 mm

Power 39 kW

Supply Gas

Capacity 200 l

Vat dimensions Ø 760x500 mm

Autoclave -

Packaging dimensions 1040x1240x1250 mm

Gross weight 208 kg