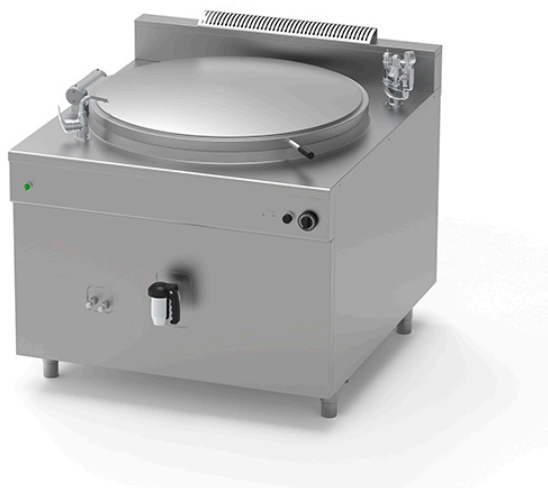


GAS BOILING PAN OF 200 L, INDIRECT HEATING PQF.IG-200/N

Ref: 1115.824.004
Icos



Ignition by means of manual piezo igniter and pilot flame.

Heating by means of high-performance tubular burners in AISI 304 stainless steel.

Ventilation grille.

Set of nozzles for various types of gas.

Control of water level in jacket with maximum/minimum taps, with option for automatic water filling.

Jacket pressure control by means of safety valve calibrated at 0.5 bar, vacuum relief valve, pressure gauge (indirect gas version with jacket only).

FEATURES

Dimensions (WDH)	1000x1150x850 mm
Power	39 kW
Supply	Gas
Capacity	200 l
Vat dimensions	Ø 760x500 mm
Autoclave	-
Packaging dimensions	1040x1240x1250 mm
Gross weight	208 kg